

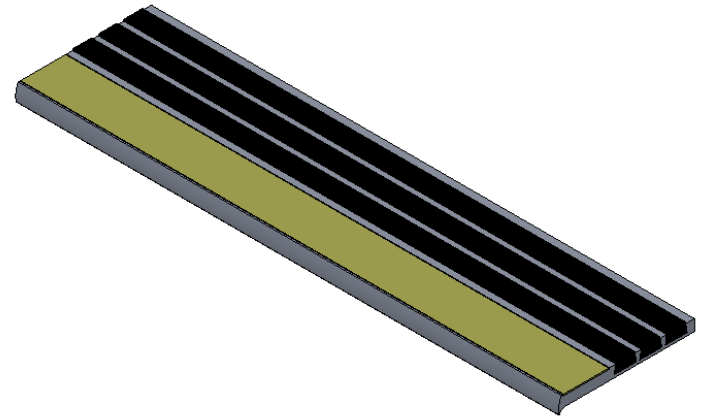
MODEL P3D-T

SPECIFICATIONS:

- ① **BASE:** EXTRUDED ALUMINUM ALLOY 6063 T-6
- ② **ABRASIVE:** ALUMINUM OXIDE SILICON CARBIDE GRANULES IN A UV PROTECTED, 2 PART EPOXY, LOCKED INTO EXTRUDED CHANNELS
3. **BASE FINISH:** MILL
4. **POURED CONCRETE STAIRS:** NOSING SHALL TERMINATE NO MORE THEN 3" FROM END OF STEPS
5. **CONCRETE FILLED STEEL PAN STAIRS:** NOSING SHALL BE FULL LENGTH OF STEPS, LESS 1/8" CLEARANCE
6. **COLOR:** BLACK (STANDARD), SAFETY YELLOW, GRAY, RED, BROWN, GREEN, BURGUNDY, BLUE, BUFF, LEADING EDGE ALWAYS LUMINESCENT

7. **LENGTH:** 12'0" MAXIMUM
8. **COUNTER SUNK HOLES** PRE-DRILLED FOR A #10 FASTENER SPACED 3" FROM ENDS AND APPROXIMATELY 12" TO 15" O.C.
9. **UL 1994 LISTED:** COMBINED WIDTH OF PHOTO-LUMINESCENT MATERIAL SHALL NOT BE LESS THAN 1"

LENGTH	QTY	COLOR



Distributed by:




Canadian Master Distributor

✉ sales@cityscapesupply.com

🌐 cityscapesupply.com

☎ 647 498 3417

PROJECT:				
ARCHITECT:				
CONTRACTOR:				
QTY:				
PART#:		STSM-P3D-T		
 9300 73rd Avenue North Minneapolis, MN 55428		TITLE:		
		Stair Tread, Single Stage, Alum, Bar Ribbed Abrasive, Short Tip Nose, Alum, Drilled, 1" Photoluminescent Grit Insert,		
NAME	DATE	SIZE	DWG. NO.	REV
DRAWN	DKL	6/5/19	A	Nystrom STSM-P3D-T ShpDr
RELEASED	TR	6/5/19	WEIGHT:	SHEET 1 OF 1