

## MODEL STSF-P2E

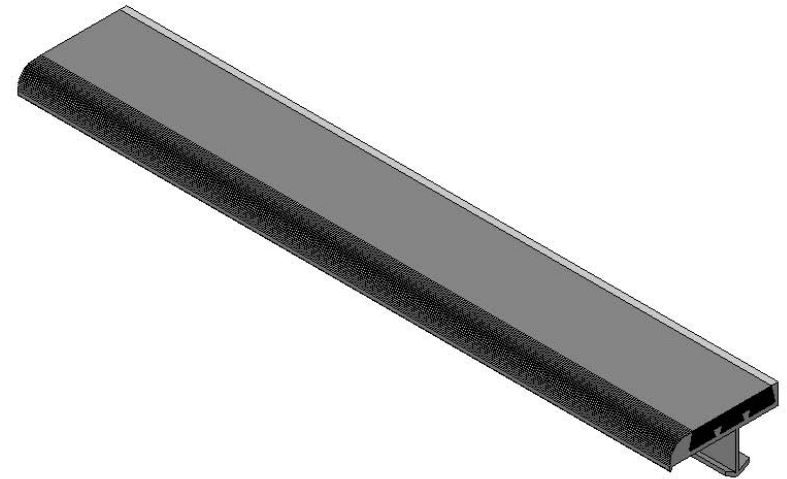
(SINGLE STAGE FULL ABRASIVE)

### SPECIFICATIONS:

- ① **BASE:** EXTRUDED ALUMINUM ALLOY 6063 T-5
- ② **ABRASIVE:** ALUMINUM OXIDE SILICON CARBIDE GRANULES IN A UV PROTECTED, 2 PART EPOXY, LOCKED INTO EXTRUDED CHANNELS
3. **BASE FINISH:** MILL
4. **POURED CONCRETE STAIRS:** NOSING SHALL TERMINATE NO MORE THEN 3" FROM END OF STEPS
5. **CONCRETE FILLED STEEL PAN STAIRS:** NOSING SHALL BE FULL LENGTH OF STEPS, LESS 1/8" CLEARANCE
6. **COLOR:** BLACK (STANDARD), SAFETY YELLOW, GRAY, RED, BROWN, GREEN, BURGUNDY, BLUE, BUFF, LUMINESCENT

7. **LENGTH:** 12'0" MAXIMUM
8. **UL 1994 LISTED:** COMBINED WIDTH OF PHOTO-LUMINESCENT MATERIAL SHALL NOT BE LESS THAN 1"

LENGTH	QTY	COLOR



Distributed by:




Canadian Master Distributor

✉ sales@cityscapesupply.com

🌐 cityscapesupply.com

☎ 647 498 3417

PROJECT:					
ARCHITECT:					
CONTRACTOR:					
QTY:					
PART#:				STSF-P2E	
 9300 73rd Avenue North Minneapolis, MN 55428				TITLE:	
				Stair Tread, Full Abrasive, Short Nose, Alum Extruded Anchor, Single Stage	
	NAME	DATE	SIZE	DWG. NO.	REV
DRAWN	DKL	4/17/17	A	STSF-P2E	A
RELEASED	DT	4/17/17	WEIGHT: 1.50 LB	SHEET 1 OF 1	