

## MODEL N1.375E

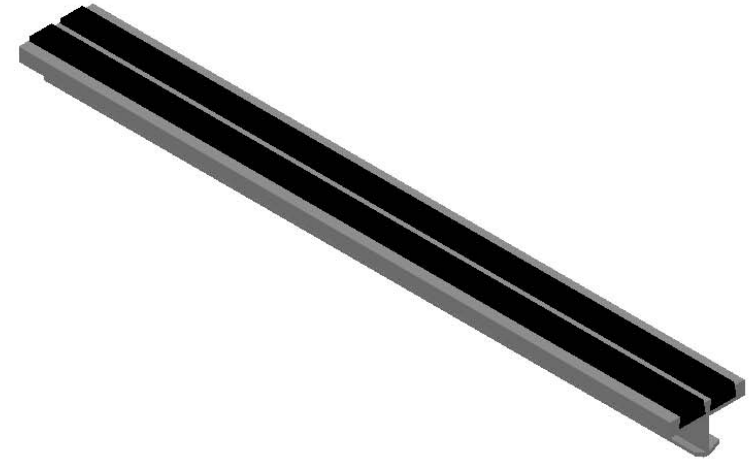
(SINGLE STAGE RIBBED ABRASIVE BARS)

### SPECIFICATIONS:

- ① **BASE:** EXTRUDED ALUMINUM ALLOY 6063 T-5
- ② **ABRASIVE:** ALUMINUM OXIDE SILICON CARBIDE GRANULES IN A UV PROTECTED, 2 PART EPOXY, LOCKED INTO EXTRUDED CHANNELS
3. **BASE FINISH:** MILL
4. **POURED CONCRETE STAIRS:** NOSING SHALL TERMINATE NO MORE THEN 3" FROM END OF STEPS
5. **CONCRETE FILLED STEEL PAN STAIRS:** NOSING SHALL BE FULL LENGTH OF STEPS, LESS 1/8" CLEARANCE

6. **COLOR:** BLACK (STANDARD), SAFETY YELLOW, GRAY, RED, BROWN, GREEN, BURGUNDY, BLUE, BUFF, LUMINESCENT
7. **LENGTH:** 12'0" MAXIMUM
8. **UL 1994 LISTED:** COMBINED WIDTH OF PHOTO-LUMINESCENT MATERIAL SHALL NOT BE LESS THAN 1"

LENGTH	QTY	COLOR



Distributed by:


**Canadian Master Distributor**

✉ sales@cityscapesupply.com

🌐 cityscapesupply.com

☎ 647 498 3417



PROJECT:					
ARCHITECT:					
CONTRACTOR:					
QTY:					
PART#:				STSB-N1.375E	
 9300 73rd Avenue North Minneapolis, MN 55428				TITLE:	
				V121, Stair Tread, Bar Ribbed Abrasive, No Nose, Alum Extruded Anchor	
	NAME	DATE	SIZE	DWG. NO.	REV
DRAWN	BMH	3/11/11	A	Nystrom STN STSB-N1.375E ShpDr	A
RELEASED	PE	3/11/11	WEIGHT: .65 LB	SHEET 1 OF 1	