



CAST-IN-PLACE (REPLACEABLE)

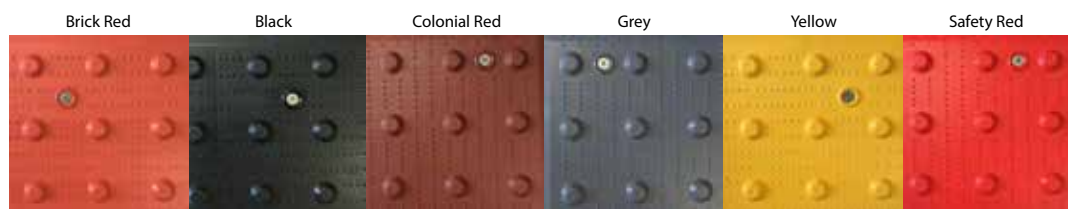
Detectable Warning System

AlertCast® is a glass reinforced thermoset composite engineered for superior impact resistance, slip resistance, wear resistance and long-term durability.

Our exclusive design incorporates a top panel of superior slip-resistant truncated domes molded to exact ADA specifications for detectable warnings and bottom docking anchors that are embedded into wet concrete. Our proprietary **PENETRATOR®** concrete anchors lock the panel securely into the concrete without displacing aggregate or trapping air beneath the panel's surface. This unique design is lightweight, strong and flexible so installations are quick and easy.

AlertCast® is available in a variety of sizes and colors, backed by a 5-year warranty and is the **most versatile cast-in-place (replaceable) detectable warning system available.**

COLORS:



FED 22144

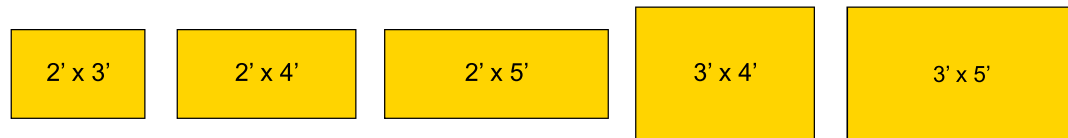
FED 17038

FED 20109

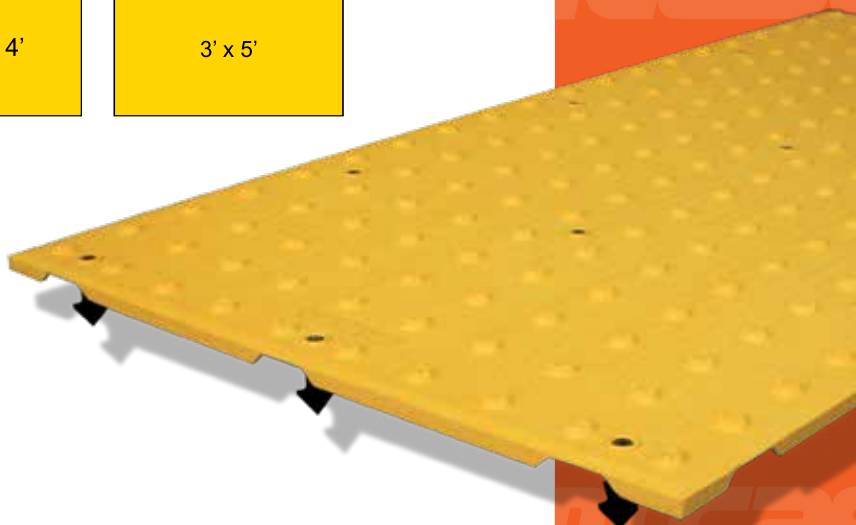
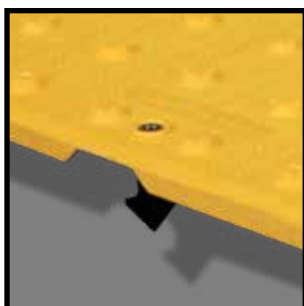
FED 36118

FED 33538

FED 31350



Panels shipped with **PENETRATOR®** anchors installed



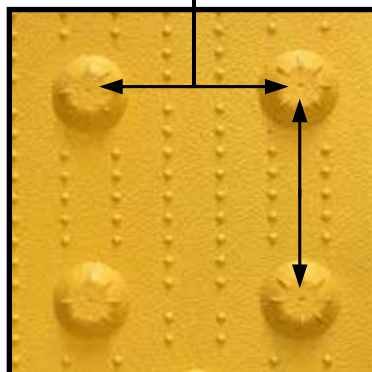
ALERTCAST® EXCEEDS ADA SPECIFICATIONS FOR DETECTABLE WARNINGS!

Protective covering ensures installations are clean and tidy

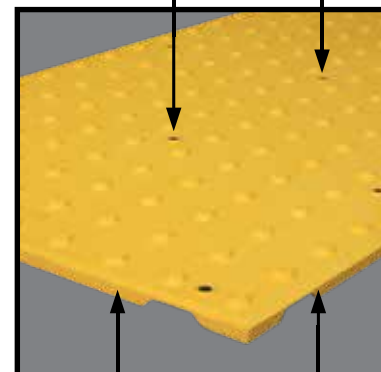
Installation instructions attached to every panel (written in English and Spanish)



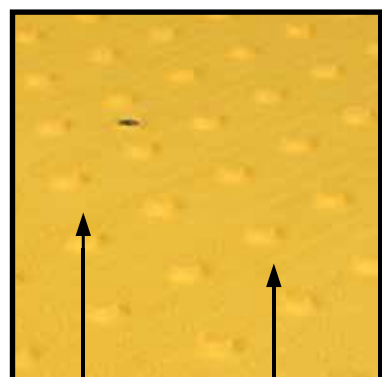
ADA compliant inline dome spacing



Recessed stainless steel fasteners provide for easy panel replacement



Beveled edges for superb wheelchair egress



Superior wet and dry slip resistance

Corrosion resistant composite anchors provide superior pullout strength with unlimited re-installation based on self-threading design.

Tamper resistant 1/4" stainless self-threading screw

PENETRATOR®
Patent No. D634860



Unique dome feature allows for field installation of additional counter sunk fastener locations when required

MATERIAL SPECIFICATIONS

PROPERTY	ASTM STANDARD	RESULT
Slip Resistance	ASTM C 1028	Dry = 1.03/Wet = 0.83
Impact Resistance	ASTM D 256	8.0 Izod ft-lbs/in (notch)
Accelerated Weathering	ASTM G155-05	No Change (2,000 hours)
Compressive Strength	ASTM D695	30,000 psi
Flexural Strength	ASTM D 790	23.224 psi
Tensile Strength 1/8"	ASTM D 638	12,741 psi
Water Absorption	ASTM C373	0.3-0.6%
Color	Integral Throughout Product	Yes
Color/Contrast	Cap-Y (LRV)	Brick Red 5-15 Safety Yellow 25-50 Colonial Red 5-15
Dome Height	0.2"	Complies (with ADAAG)
Dome Base Width	0.9"	Complies (with ADAAG)
Dome Top Diameter	0.45"	Complies (with ADAAG)
Dome Spacing	2.4"	Center-to-Center
Salt Spray	ASTM B 117	No Change (200 hours)
Wear Resistance	ASTM C 501	83 grams or 0.0107"
PENETRATOR® Concrete Anchor	Pullout Strength	729 Pounds per anchor
Freeze-Thaw Durability	ASTM C1262-08	No Disintegration
Waste Classification	USEPA 40 CFR Part 261	Non-Hazardous

Distributed by:

Canadian Master Distributor

✉ sales@cityscapesupply.com

🌐 cityscapesupply.com

📞 647 498 3417

DWS DETECTABLE WARNING SYSTEMS
THE SOURCE FOR ADA COMPLIANCE

CITYSCAPE SUPPLY GROUP

MADE IN
USA

